

# LiquidSave

Gravimetric liquid dosing system



**Innovation**  
*In Every Dose*

## Highly accurate and consistent dosing

**LiquidSave** is a gravimetric dosing system designed to precisely dose liquid materials on any plastics processing machine, whether injection molding, blow molding, or all extrusion applications.

**LiquidSave** is extremely accurate and economical, and is simple to install and operate. It delivers accurate dosing on the basis of continuous loss-in-weight metering technology with closed-loop pump speed control.

**LiquidSave** is equipped with an easily transportable trolley, which carries the main tank, spare tank, pump, and the controller. The spare tank allows easy change of tanks when the main tank is emptied.

### LiquidSave Features:

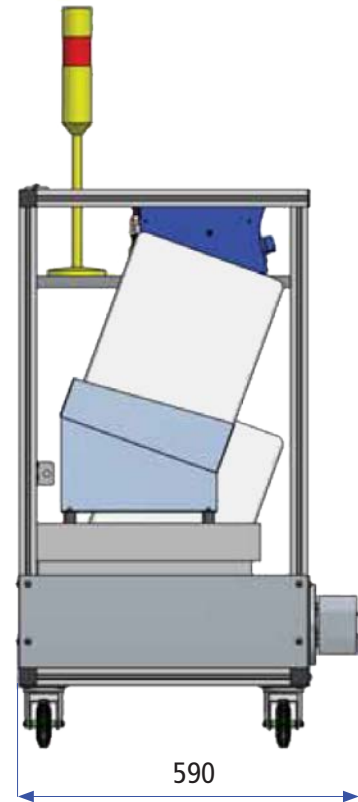
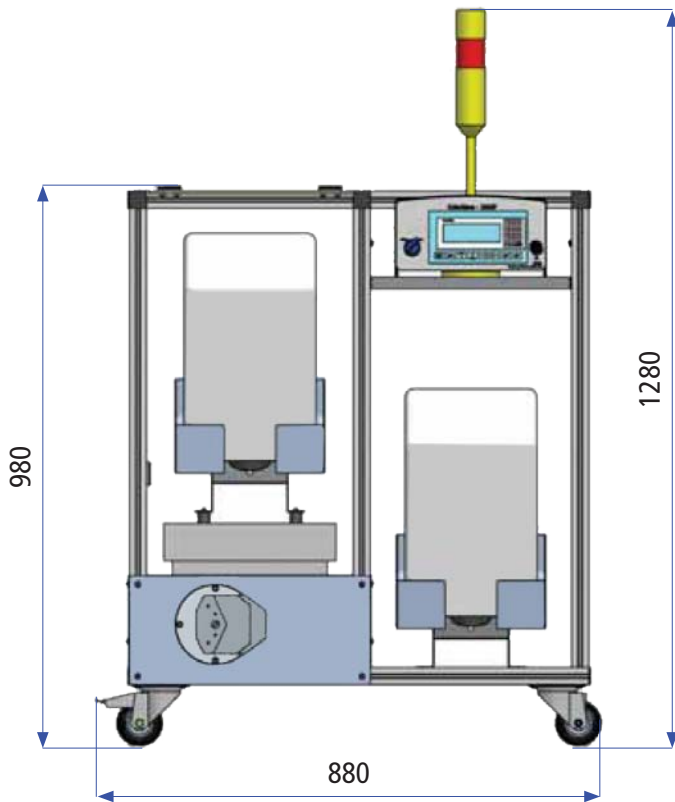
- Peristaltic pump, prevents contamination of the liquid or the pump
- Easy to transport trolley
- Integrated alarm lamp
- Multiple recipes
- 0.005-24 ml/sec

### LiquidSave Advantages:

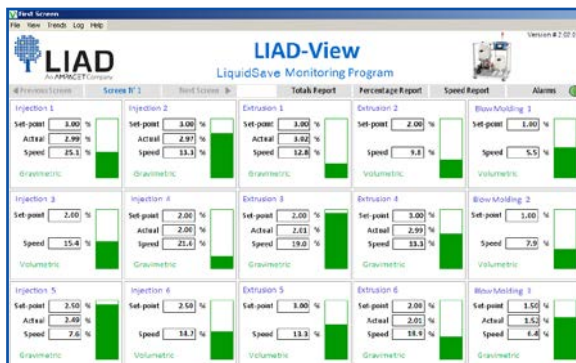
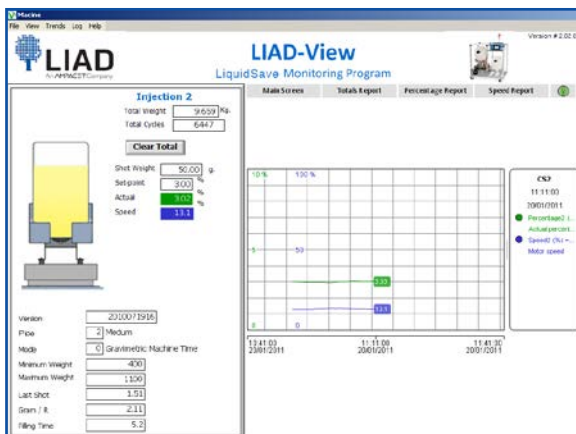
- Includes spare tank, which prevents the need to stop the processing machine or produce defective products while main tank is finished
- Extreme accuracy and repeatability allows precise dosing and prevents overdosing of materials
- Loss-in-weight controlling function allows optimum adjustment of operating point
- Improved final product quality and reduced number of rejects
- Very simple operation with automatic calibration (zero setup time) ensures maximal efficiency
- Peristaltic pump, prevents contamination of the liquid or the pump
- Easy to transport trolley
- Integrated alarm lamp
- Multiple recipes
- 0.005-24 ml/sec

### LiquidSave Specifications:

Feature	Specification
Output range	0.005-24 ml/sec
Pump	4-roller peristaltic pump
Motor	Step motor
Controller	Sophisticated powerful control unit, with 4.3" color touch screen
Power	100-240v, 250W, 50/60hz



## LIAD-View



A monitoring program for the LiquidSave.

You can utilize LIAD-View to:

- See in one single screen the working statuses of all LiquidSave feeders
- View historic graphs of each feeder, including actual percentage and motor speed
- See all the parameters of each feeder such as total weight, shot weight etc.
- Update the working parameters directly to the feeders
- Generate historic reports, such as total weight, actual percentage etc.



Tel: +972-4-9028800 • Fax: +972-4-9028818 • e-mail: [prod@liad.co.il](mailto:prod@liad.co.il)  
POB 10, Sky St., Misgav Industrial Park 2017400 Israel  
[www.liad.co.il](http://www.liad.co.il)